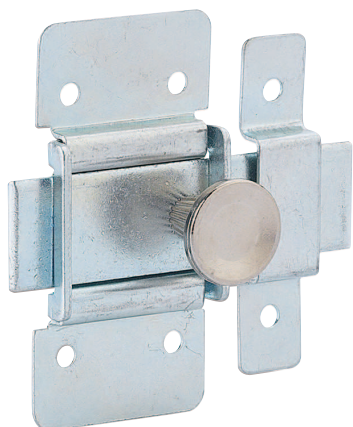


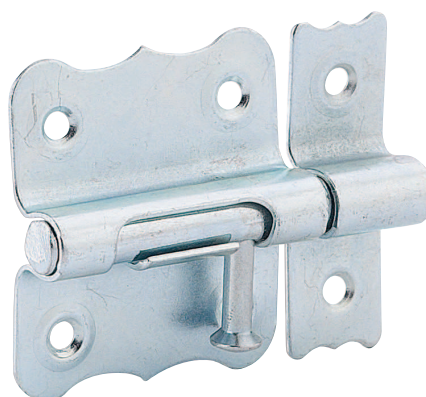


PÊNE PLAT

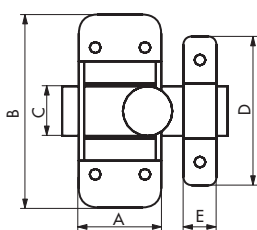
PÊNE ROND



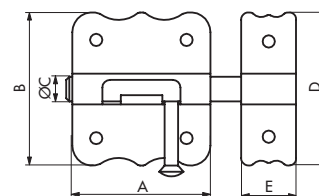
000730



002035



	30 mm	40 mm
A	30	40
B	70	80
C	18	21
D	54	68
E	12	15



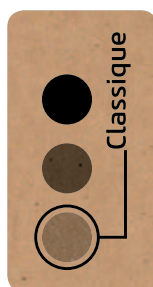
	35 mm	45 mm
A	38	49
B	41	48
C	6	6,5
D	36	48
E	16	16

Description / Description / Descripción

Platine acier cambré. Gâche acier cambré. Bouton rond nickelé. Pêne plat coulissant.

Cambered steel plate. Cambered steel striker. Nickel plated round bolt Sliding flat bolt.

Pletina de acero curvado. Cerradero de acero curvado. Botón redondo niquelado Pestillo plano deslizante.



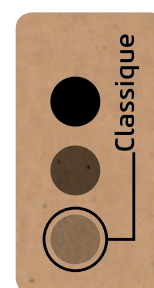
Classique

Description / Description / Descripción

Platine acier cambré. Gâche acier cambré. Bouton poire. Pêne rond coulissant.

Cambered steel plate. Cambered steel striker. Oval knob. Sliding round bolt.

Pletina de acero curvado. Cerradero de acero curvado. Botón pera. Pestillo redondo deslizante.



Classique

Finition / Finish / Acabado

Zingué
Zinc coated
Cincado

Finition / Finish / Acabado

Zingué
Zinc coated
Cincado

Designation	Boite	Colis.	Prix	Bac	Colis.	Prix	Blister				Colis.	Prix
							France	Euro 1	Euro 2	Euro 3		
TARGETTE zinguée 35 mm	0020359	10		9020350	30		1020358	1930985	1920986	1940984	10	
TARGETTE zinguée 45 mm	0020458	10		9020459	30		1020457	1930992	1920993	1940991	10	
TARGETTE zinguée pêne plat 30 mm	0007305	10		9007306	30		1007304	1930961	1920962	1940960	10	
TARGETTE zinguée pêne plat 40 mm	0007404	10		9007405	10		1007403	1930978	1920979	1940977	10	